

AN OVERVIEW OF HISTORY DEPARTMENT

□ Bibhuti Kalita
Associate Professor &
HoD, Deptt. of History
Bikali College, Dhupdhara

The department of History, Bikali College, Dhupdhara, was established in 1982, the same year of establishment of the college. Initially the number of the students was few. Gradually the number of students increased and it also popularised among the students. Since 1998-99 session the department has been offering major courses.

The main objective of our department is to create a healthy academic environment for the study of History and its cultivation amongst the students in particulars and the public in general. Since its inception, the department has made remarkable contribution to academic realm. The basic objective of the department is emphasising value based education.

The department has a separate arrangement for faculty members. It has a room measuring 15" x 13" with veranda and separate class rooms for major and general courses.

The department has a library with linkage to the central library where more than 100 books are available for the benefit of the students. Besides, for imparting historical knowledge some historical journals and bulletins are there in the department.

The department has a wall magazine named "**Itihas Barta**" which covers some historical information. And has also a departmental album with some photos.

The department has initiated to publish a bulletin from the year, 2012. The department has formed a “**Historical Society**” to organise and popularise history through workshops, seminars, group discussion etc.

The department arranges some educational tours to visit various historic important places.

The department imparts +2 education and under graduate general courses. It introduced major in history in 1008-99. The department has adopted efforts to raise the number of students in major courses. Recently, there is a rising trend of student inflow in this department. Results and progress of the department is also up to the level of expectation. □

FUTURE VISION

- * To initiate necessary measures for the improvement of various study materials such as books, journals etc.
- * Arrangement of seminars.
- * Field oriented study for the students by arranging excursion to various historic important places.

The department has three faculty members for imparting education to the students.

A long dispute means that both parties are wrong.

ACTIVITIES OF BIKALI COLLEGE NSS UNIT

□ Sayed Ali Ahmed
Associate Professor & Programme Officer
NSS unit, Bikali College, Dhupdhara

National Service Scheme (NSS) is a noble experiment in academic institution for infusing the spirit of voluntary service attitude among students and teachers. It brings our academic institution closer to society for the fact that students involve very often in social service at near by village for community development. NSS has emerged as India's one of the best means for students involvement in community development.

In order to fulfil the desired noble aim, Bikali college NSS unit has been rendering opportunity to three year degree course students since 1997 for participation in NSS programmes.

Bikali college NSS unit has been performing programmes under two categories - Normal and Special camp activities. Involvement in these activities can help the students of our college in understanding own community and Building knowledge to solve problems. Besides these practices, Bikali college NSS unit helps the students in acquiring skills of communication, leadership quality and sense of equality, unity and intergrity in our diversified society.

Bikali college NSS unit arranges a special camp every year. During the camp period, yoga teaching, campus cleaning, moral teaching, sapling plantation, group discussion and report writings are

arranged for personality building. World Environment Day is observed by the NSS volunteers on 5th of June every year for creating environment awareness.

Bikali college NSS unit has an adopted village named Adarshapara village. This village has been kept under constant observation of NSS unit. During fourteen years the NSS unit has conducted several welfare programmes like literary campaign, health and hygiene awareness drive, organised health check up camp and socio-economic survey to develop the backward village. □

Obedience alone gives the right to command.

**NATIONAL SEMINAR ON THE TOPIC
CULTURAL ASSIMILATION OF NORTH EAST INDIA:
UNITY IN DIVERSITY**

□ Dr. Alpana Sakar
HoD. Assamese Department
Bhuputi Das, Associate Professor
Rajlakshmi Hazarika, Associate Professor
Joint Co-ordinators, Seminar Committee

A seminar was held on 30th December, 2011, on the topic entitled **Cultural Assimilation of North East India: Unity in diversity**. The seminar was formally inaugurated by Dr. Malina Devi Rabha, Principal of Bikali college. The keynote address was given by Prof. Birinchi Medhi, Deptt. of Anthropology, Gauhati University. The eminent persons attended the seminar as resource persons were Prof. Nabin Sarma, retired HoD, Deptt. of Folklore Research, G.U., Prof. Upen Rabha Hakacham, HoD, Assamese Deptt., G.U. and Prof. Kanak Saharia, Deptt. of Assamese, G.U. The chairperson of Goalpara District Sahitya Sabha Mr. Dilowar Hussain also attended the seminar as guest of honour. More than seventy research papers were presented by the research scholars coming from different colleges and other institutions of Assam and out side Assam. □

All the treasures of the earth cannot bring back one lost moment.

Dr. Prasanta Chakrabarty
Guidance Officer
Career Counselling and Guidance Cell
Bikali College, Dhupdhara

SEMINAR ON CAREER GUIDANCE AND IT

The Career Counselling and Guidance Cell, Bikali college, Dhupdhara, organised a seminar on **CAREER GUIDANCE AND IT** on 26th November, 2010 at the college premise. The seminar was organised for the students. The main objectives behind holding the seminar was to aware the students about the career options and other related matters specially in information technology sector. Mr. Abhijnan Sharma, Manager, Corporate Relations and Training, NIIT, Silpukhuri Centre, Guwahati, was the main Resource Person of the seminar. He was assisted by Mr. Parag Bayan, Mr. Nayanjyoti Baishya and Ms. Anayna Deka of the same institute. About 150 students of Bikali college participated in the seminar. □

WORKSHOP ON PROFESSIONAL COMMUNICATIONS

A workshop on professional communications organised by the Career Counselling and Guidance Cell, Bikali college, was held on 28th September, 2011 at the college premise . The main objectives of the workshop was to train the youths how to develop personality and face interviews. Shri Basanta Gogoi, Media and Presentation expert, Guwahati, attended the workshop as resource person. More than 100 students participated in the workshop. □

One is never too old to learn.

GEMS OF BIKALI

Rukunuddin Ahmed is our gem who has glorified the college by securing 10th position for the first time in Higher Secondary Final Examination in 2009. Miss Runumi Das is other gem who has added glory to our college by securing 10th position in Higher Secondary Final Examination, 2011. Both of them are from Arts faculty. □



Rukunuddin Ahmed



Miss Runumi Das

Women Empowerment : The Real Picture

□ Ms. Monalisha Roychoudhury
Associate Professor & HoD
Deptt. of English, Bikali College, Dhupdhara

The Government of India had ushered in the new millennium by declaring the year 2001 as 'Women's Empowerment Year' to focus on a vision 'where women are equal partners like men'. The most common explanation of 'women's empowerment' is the ability to exercise full control over one's actions. The last decades have witnessed some basic changes in the status and role of women in our society. There has been shift in policy approaches from the concept of 'welfare' in the seventies to 'development' in the eighties and now to 'empowerment' in the nineties. This process has been further accelerated with some sections of women becoming increasingly self-conscious of their discrimination in several areas of family and public life. They are also in a position to mobilize themselves on issues that can affect their overall position.

The latest news items regarding violence committed against women reveal that women's position has worsened. Tulsidas' verse from Ramayana 'Dhol, janwar, shudra, pashu, nari ye sub nindan ke adhikari' highlights the discrimination and deep-rooted gender bias which still exists in all sectors on the basis of caste, community, religious affiliation and class. The Constitution of India grants equality to women in various fields of life. Yet a large number of women are either ill equipped or not in a position to propel themselves out of their traditionally unsatisfactory socio-economic conditions. They are poor, uneducated and insufficiently trained. They are often absorbed in the struggle to sustain the family physically and emotionally and as a rule are discouraged from taking interest in affairs outside home. Oppression and atrocities on women are still rampant. Patriarchy continues to be embedded in the social system in many parts of India, denying a majority of women the choice to decide on how they live. The over-riding importance of community in a patriarchal sense ensures that women rarely have an independent say in community issues. Female

infanticide continues to be common. Statistics show that there is still a very high preference for a male child in states like UP, MP, Punjab etc. The male to female ratio is very high in these states. Domestic violence is also widespread and is also associated with dowry. Leaving a meager number of urban and sub-urban women, Indian women are still crying for social justice.

A review of government's various programmes for women empowerment such as Swashakti, Swayamsidha, Streeshakti, Balika samrudhi yojana and another two thousand projects reveal that little has been done or achieved through these programmes. The discrepancy in the ideology and practice of the empowerment policy of women in India constitutes its continued social, economic and social backwardness. Women make up 52% of our country's population. Hence there can be no progress unless their needs and interests are fully met. Empowerment would not hold any meaning unless they are made strong, alert and aware of their equal status in the society. Policies should be framed to bring them into the mainstream of society. It is important to educate the women. The need of the hour is to improve female literacy as education holds the key to development. But education alone too cannot achieve or fulfil the needs of a woman. She needs to assert her right with a strong mind and not allow herself to be crushed under the prejudices and superstitions of the society. It has been a long struggle to where we have reached today and will take a lot many years to realize the dream of a just and equal society of our dream where man and woman will share an equal platform for existence.

....And miles to go before I sleep

And miles to go before I sleep. (Robert Frost)



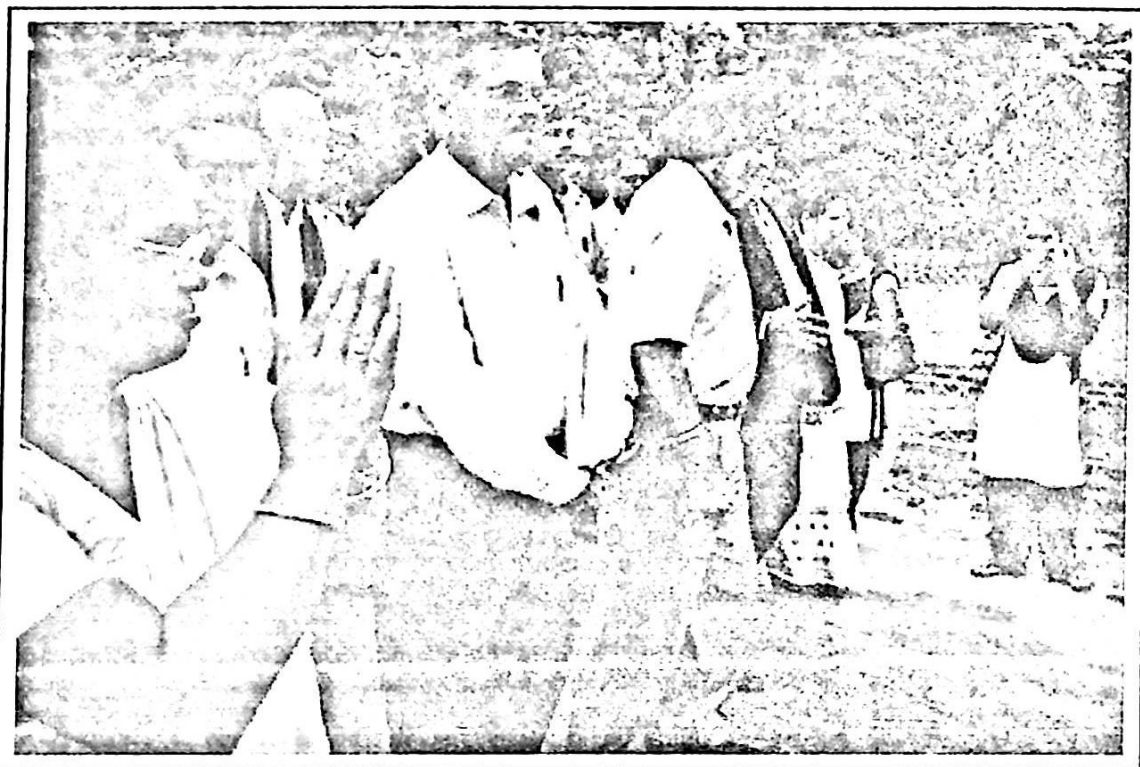
Intolerance is the greatest enemy of progress



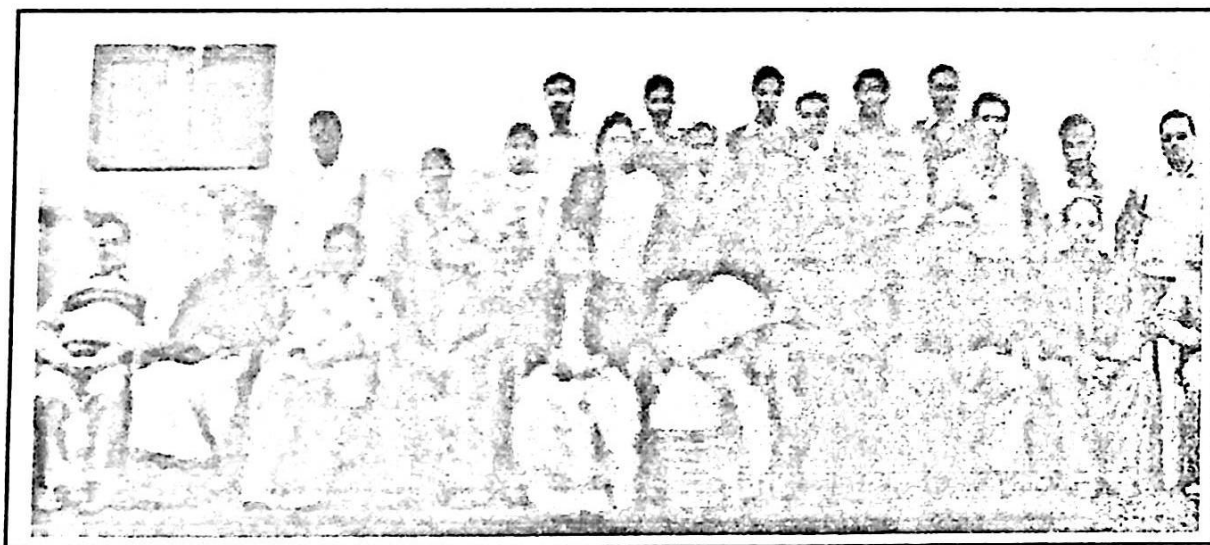
Principal is seen working in her office chamber



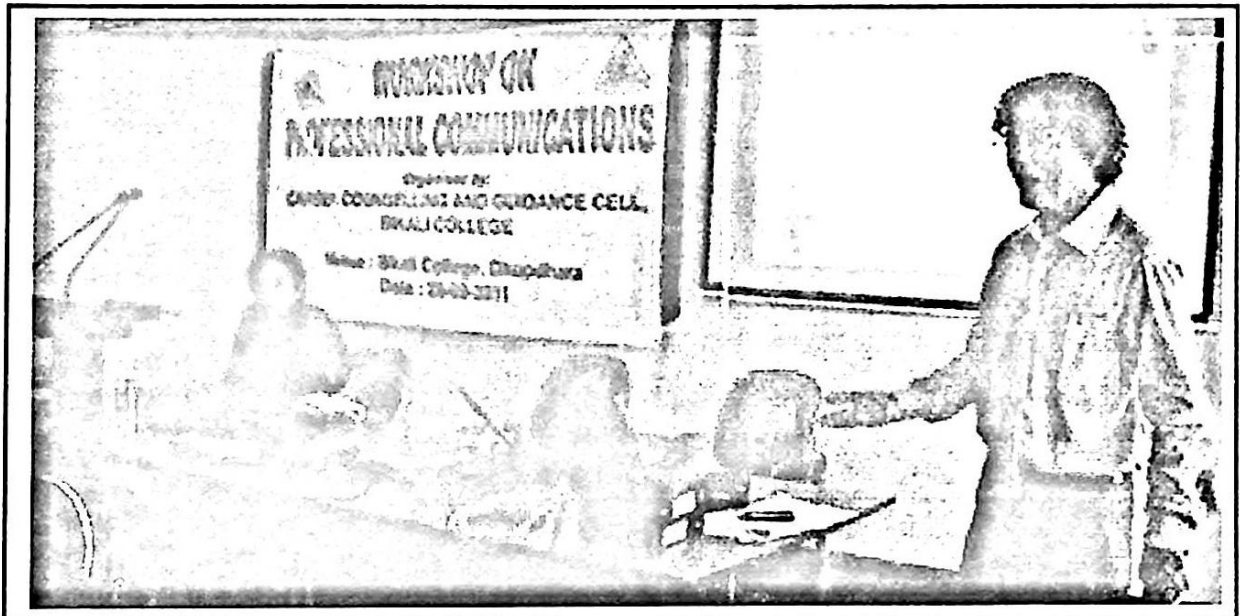
Second NAAC PEER TEAM is seen visiting college for assessment, 2010



Principal is seen welcoming NAAC PEER TEAM



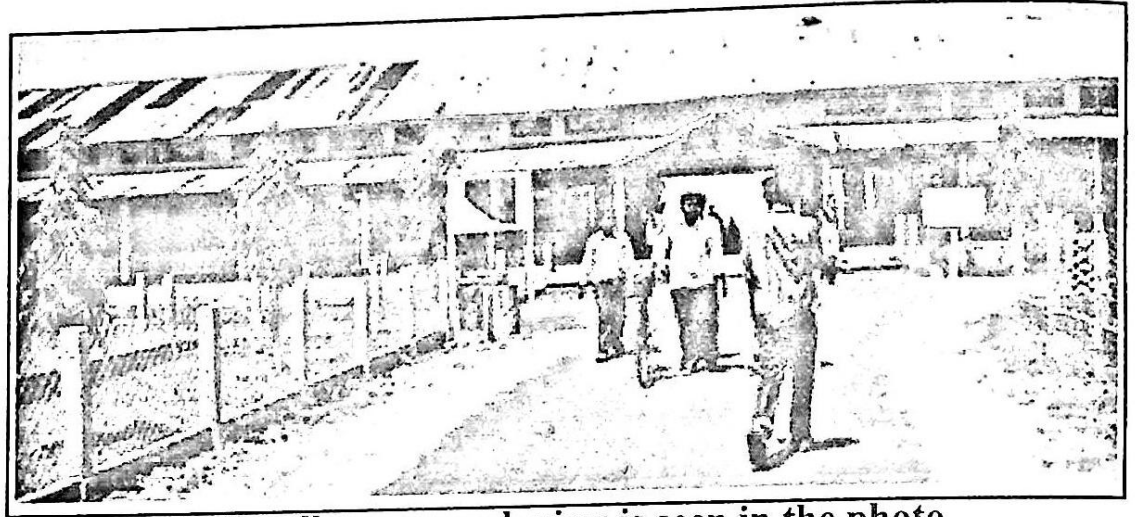
Bikali College Teaching Staff



Sri Basanta Gogoi is seen delivering lecture as resource person in a workshop on professional communications



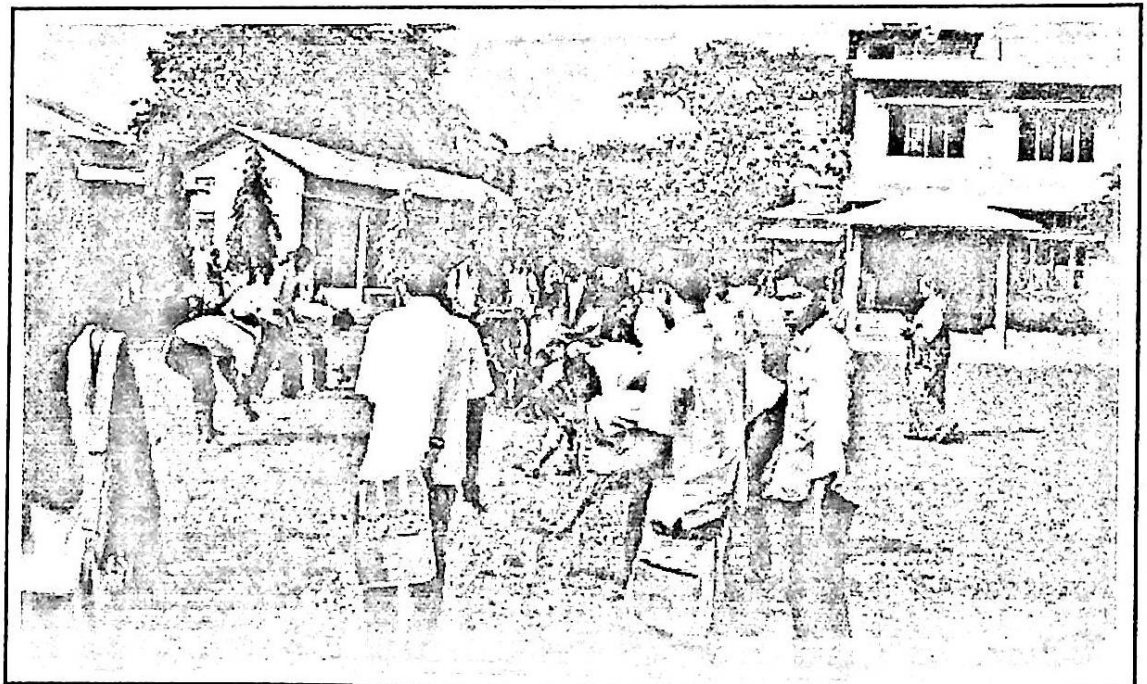
Bikali College Office Staff is seen in the photo



Bikali college approach view is seen in the photo



A folk dance is being performed by students



NSS volunteers are seen cleaning the college campus